



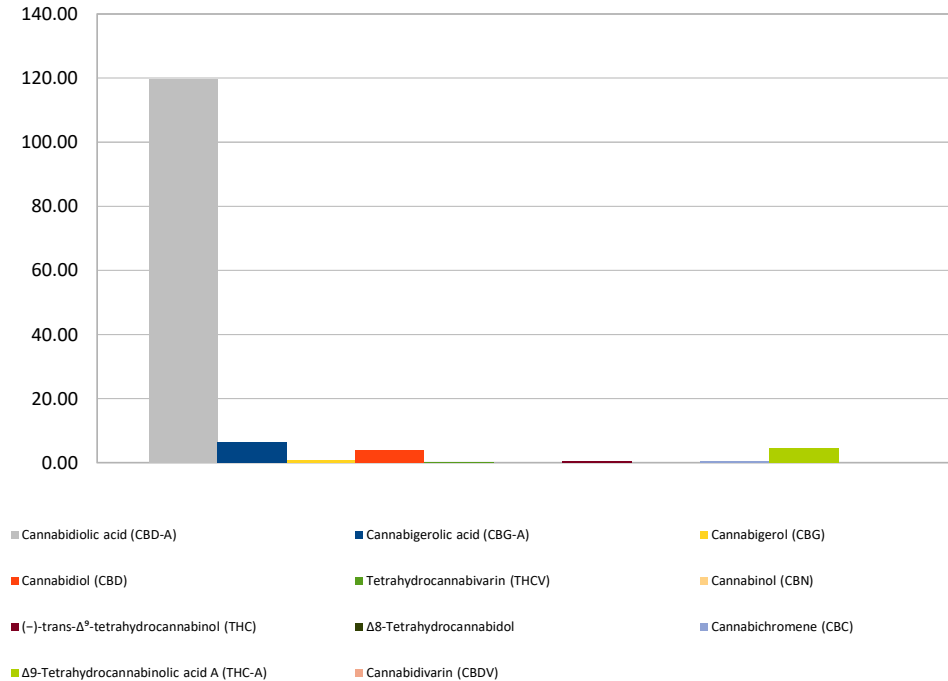
Cannabinoid Profile

Customer: HH North LLC
Customer Sample ID: Island Time
Laboratory Number: 201905-0492
Extraction Technician: CB
Analytical Chemist: CB

Extraction Date(s):	Analysis Date(s)
5/14/2019	5/14/2019

Cannabinoid (HPLC)	Results		
	LOD (mg/g)	Percent	mg/g
Cannabidivarin (CBDV)	<0.1		
Cannabidiolic acid (CBD-A)		11.97%	119.73
Cannabigerolic acid (CBG-A)		0.64%	6.37
Cannabigerol (CBG)		0.07%	0.70
Cannabidiol (CBD)		0.39%	3.90
Tetrahydrocannabivarin (THCV)		0.03%	0.31
Cannabinol (CBN)	<0.1		
(-)-trans- Δ^8 -tetrahydrocannabinol (THC)		0.06%	0.58
Δ^8 -Tetrahydrocannabinol	<0.1		
Cannabichromene (CBC)		0.06%	0.60
Δ^9 -Tetrahydrocannabinolic acid A (THC-A)		0.46%	4.60
Cannabinoids Total		Percent	mg/g
Max Active THC		0.46%	4.62
Max Active CBD		10.89%	108.91
T. Active Cannabinoids		0.58%	5.78
Total Cannabinoids		13.68%	136.79
Ratios			
23.86 :1 CBD to THC		0.04 :1 THC to CBD	

Cannabinoid (mg/g)



Altitude Consulting, LLC utilizes NIST traceable Reference Standards and Certified Reference Material to calibrate analytical instruments along with proven analytical methods. The methods are applied in the most ethical manner following good laboratory practice guidelines. The results of this report are based solely on the sample submitted and cannot be reproduced. This report expires 30 days after analysis date.